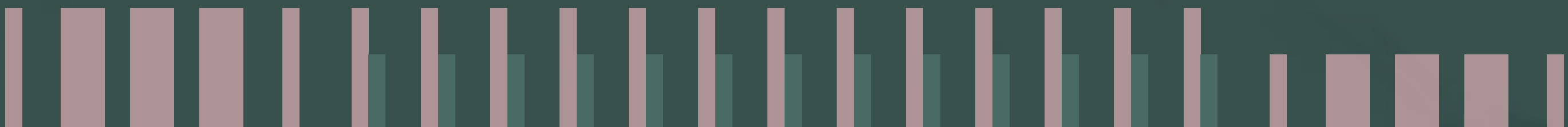


# nUE REN

CHAENGWATTANA





One Place For Every Lifestyle  
Comfort Redefined In Everyday

‘NUE REN CHAENGWATTANA’



New **comfort living** condo,  
In the heart of Chaengwattana.



**Feel the touch of nature at the heart of it all**

The new condo from Noble, ‘NUE REN CHAENGWATTANA’.  
Designed for Downtown Lifestyle, focusing on  
comfort living with over 4 rai of space and  
2,900 sq.m. garden. Creating a sense of comfort  
by seamlessly blending elements of nature—earth,  
water, wind, and light—into the design.



**On the prime location in the  
heart of Chaengwattana,  
a Lifestyle District that never stops growing!**

**Live comfortably for the long haul,  
with plenty of space for future development.**

---

## **Connect Life With Every Locations**

**With Pink Line MRT  
Connecting 6 routes across Bangkok.**

## **The Ultimate Lifestyle Neighborhood**

**Surrounded by shopping center  
and community mall.**

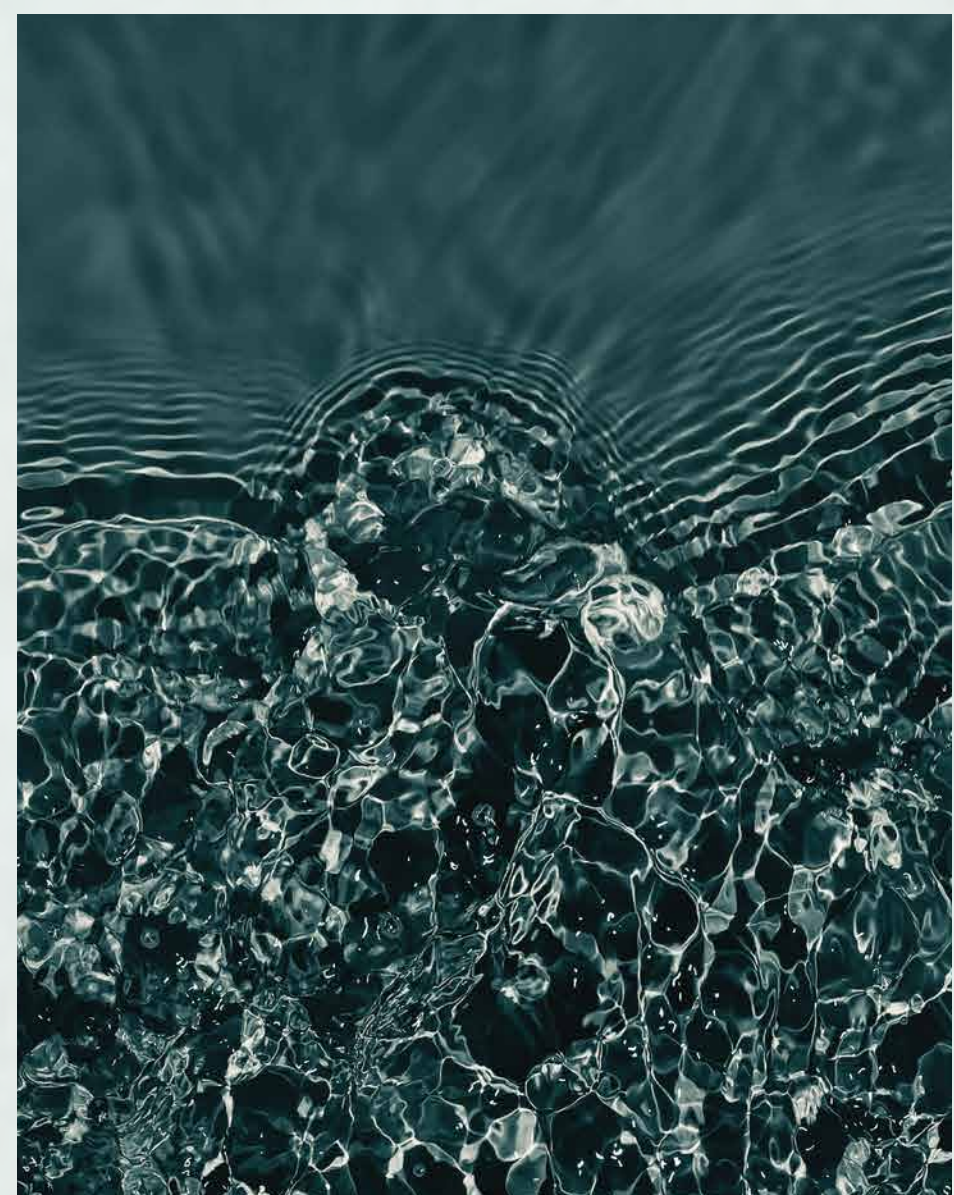
## **High Demand In Area**

**Surrounded by office building,  
and close to school and universities.**

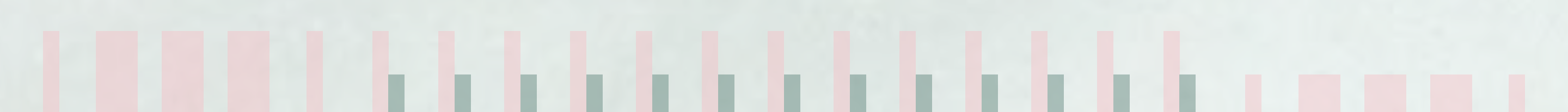
## **The New Medical Hub**

**One of the best locations for healthcare,  
with many leading hospitals nearby.**

---



**Whether your lifestyle is...  
live comfortably in the heart of Chaengwattana**





# The Prime Location In The Heart Of Chaengwattana

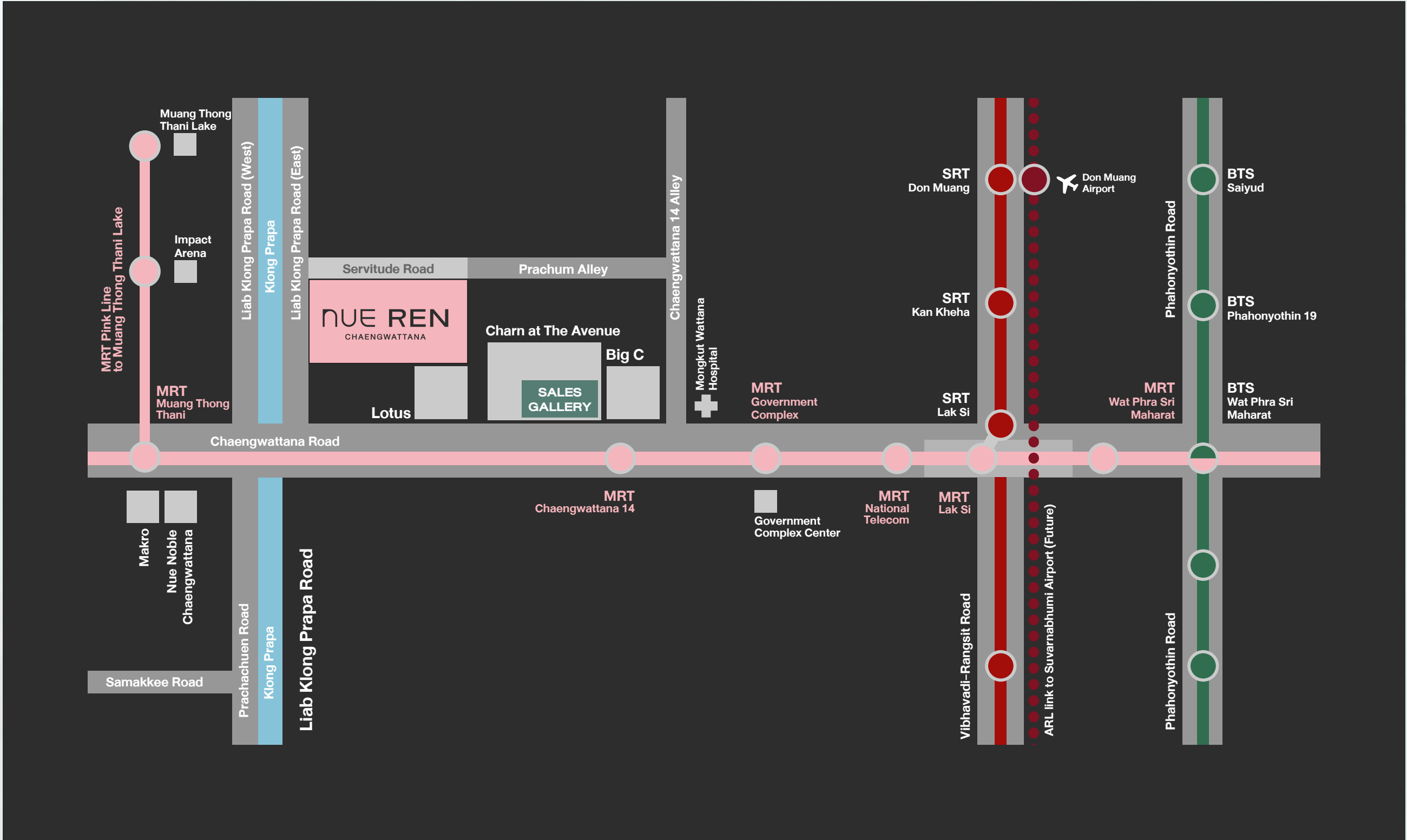
## Live Comfortably, SHOPAHOLIC Style

Next to 3 shopping malls, just one step away!  
Drink, eat, shop, stock up—just chill Lotus’s Chaengwattana,  
Charn At The Avenue, Big C Chaengwattana

## Live Comfortably, even without being at home

Easy access to the city—just 2 minutes\*  
to the MRT Chaengwattana 14 Station  
and the Government Complex

### LOCATION MAP





# Project Information

Project Name

Nue Ren Chaengwattana

Location

Liab Klong Prapa Road, 300m. from Chaengwattana Road

Developer

Vertical Chaengwattana Alliance Co., Ltd.

Project Type

Free Hold Residential Condominium

Consist Of

3 Residential Buildings / 1 Clubhouse Building

Floor

8 Floors / 2 Floors

Total Units

467 Residential Units

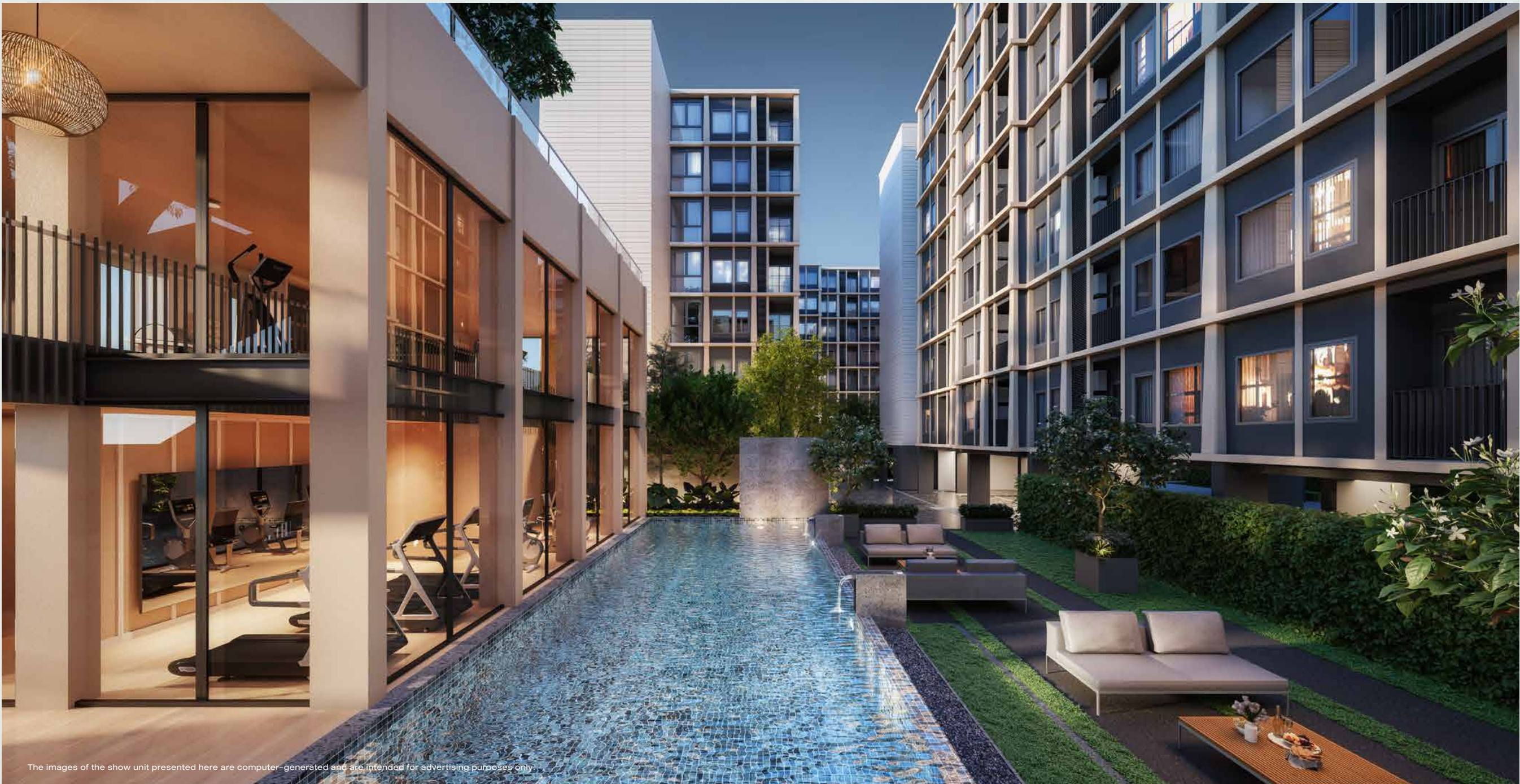
Building A = 145 Residential Units

Building B = 154 Residential Units

Building C = 168 Residential Units

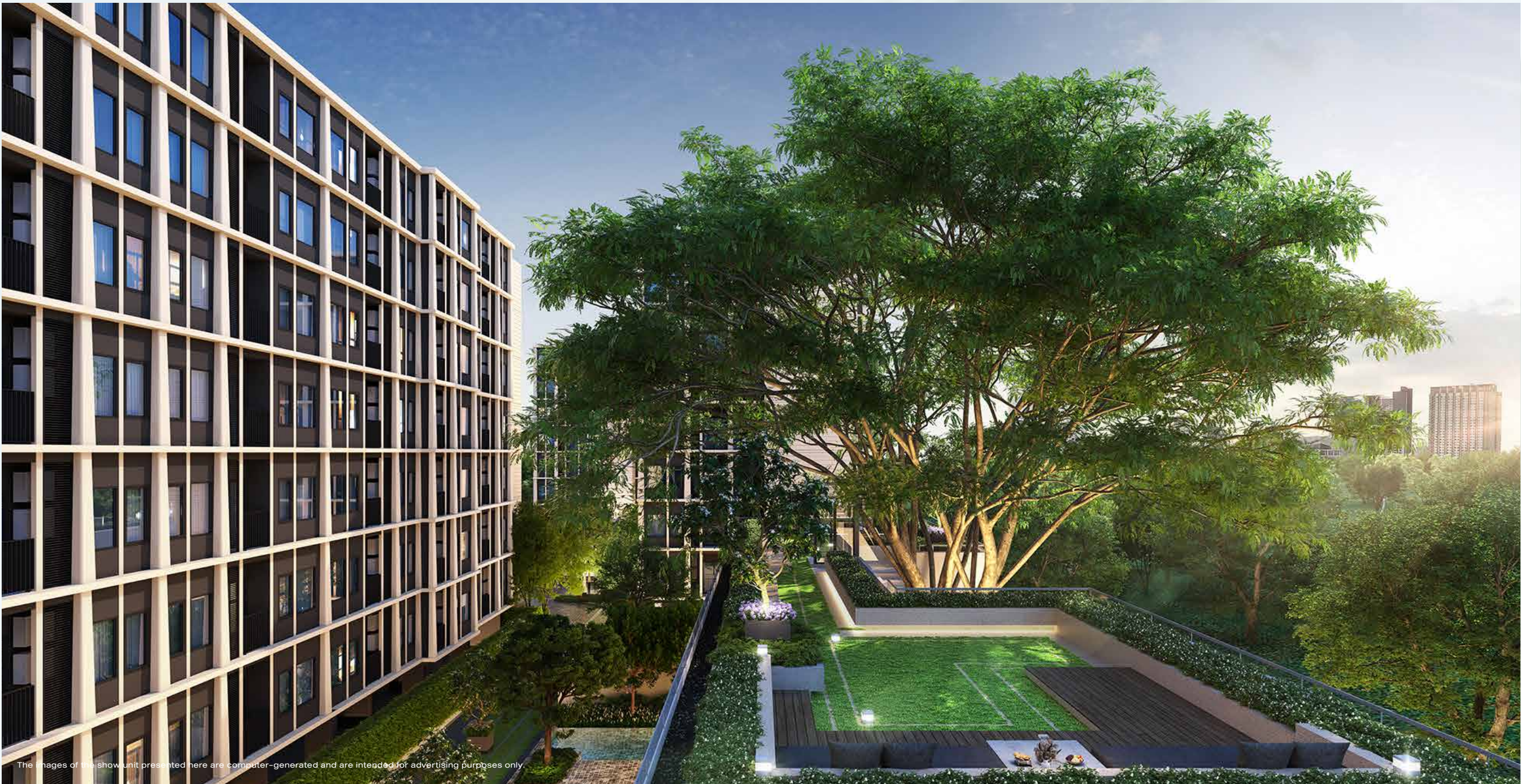
Land Area

4-1-93.3 Rais (7,173.20 Sq.m.)



The images of the show unit presented here are computer-generated and are intended for advertising purposes only.





Room Type

- 1 Bedroom     1 Bed S (27.00 Sq.m.)  
                         1 Bed M (31.20 Sq.m.)  
                         1 Bed L (34.50 Sq.m.)  
                         1 Bed Plus (34.80 Sq.m.)
- 2 Bedroom     2 Bed S (42.00 Sq.m.)  
                         2 Bed M (50.00 Sq.m.)

Facilities

Ground Floor

- 2,591.95 Sq.m. Openspace & Garden
- 3 Lobbies (The Lobby of Each Building  
Includes Grab & Go / Laundry / Mailbox Area)

Clubhouse

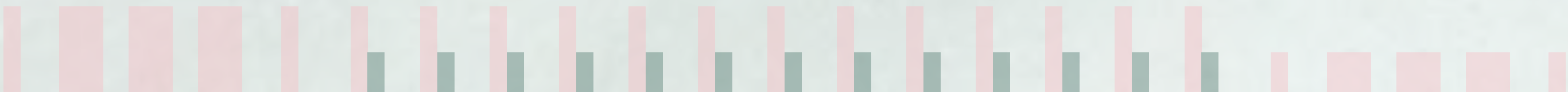
- 267.75 Sq.m. Roof Garden
- Swimming Pool – 20x5 m. and Kids Pool
- Fitness Room

Parking Space

- 174 Parking Lots on Ground Floor  
(Autoparking 11 Lots)

Security System

- CCTV and Security Officer 24 Hours
- Security System with Access Control  
by Face Scan and Keycard



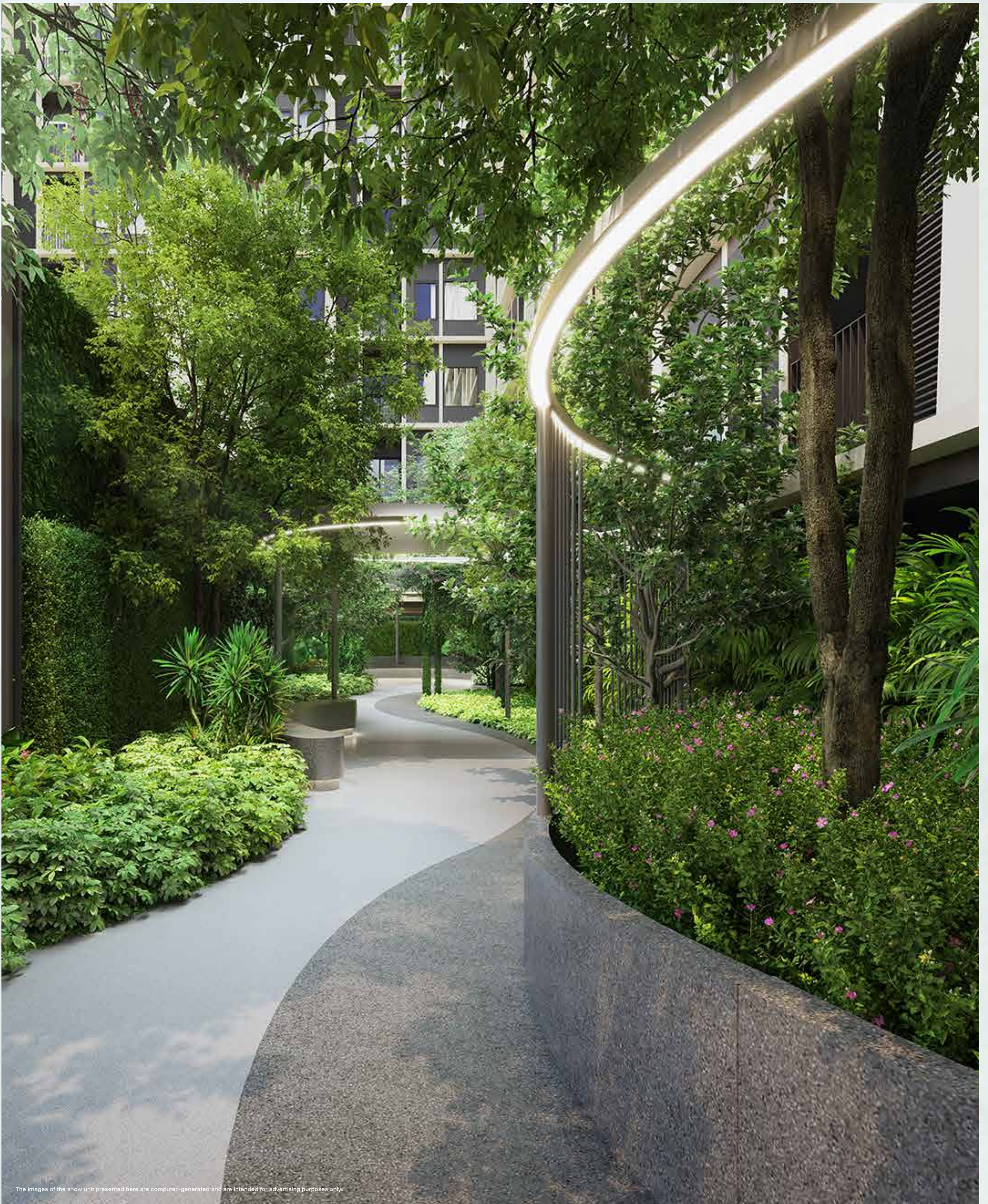


## Even More Comfort at home

---

Wide-front room in every units, offering flexible space.  
Experience low-rise condo living, comfort with privacy

More space more comfort designed for a lifestyle  
that makes the most of every inch, maximize every  
square meter to suit your lifestyle, offering an escape  
space from bustle of city life the moment you step in.



The images of the show unit presented here are computer-generated and are intended for advertising purposes only.



# ROOM TYPE

1 BEDROOM    1 BED S (27.00 Sq.m.)



1 BEDROOM    1 BED M (31.20 Sq.m.)





# ROOM TYPE

1 BEDROOM    1 BED L (34.50 Sq.m.)



1 BEDROOM    1 BED PLUS (34.80 Sq.m.)





# ROOM TYPE

2 BEDROOM    1 BED S (42.00 Sq.m.)



2 BEDROOM    1 BED M (50.00 Sq.m.)





# Shaded by trees, peace throughout the project

---

Surrounded by 2,900 sq.m. of gardens,  
connecting all buildings via courtyards, with a  
private roof garden in each building



## Total comfort in every activities

---

With multifunctional facilities  
designed for comfort.

Swimming Pool | Swim in comfort, surrounded by nature  
Garden View Gym | Train in style with a relaxing view  
Co-Working&Co-Living Space | Work life balance made easy







The images of the show unit presented here are computer-generated and are intended for advertising purposes only.



The images of the show unit presented here are computer-generated and are intended for advertising purposes only.





The images of the show unit presented here are computer-generated and are intended for advertising purposes only.



**nue REN**  
CHAENGWATTANA

The images of the show unit presented here are computer-generated and are intended for advertising purposes only.



# nUE REN

CHAENGWATTANA

noble



@nobledev | 02-251-9955 | noblehome.com

NUE Ren Chaengwattana Condominium Project : Owned and operated by Vertical Chaengwattana Alliance Company Limited. Office Address: 1035 NOBLE Building, Ploenchit Rd., Lumpini, Pathumwan, Bangkok 10330. Registered and paid-up capital THB 10 million. Authorized Director: Mr. Tongchai Busrapan, Mr.Thianthan Chalermasaphayakorn and Mr. Theeraphon Voranithiphong. Project Location:Land title deed No. 12389, 40255 and 40256 Thung Song Hong, Lak Si, Bangkok. Project's land area: Approximately 4-1-93.3 Rais. The Project is a condominium 3 Building 8 stories with 467 residential units, club house and juristic person office 1 building 2 stories. Currently, the project has financial support and obligation from Kasikorn Bank Public Company Limited. The Project obtained the approval on the environmental impact assessment report, referred to the letter No. Tor Sor 1009.5/22583, dated November 19,2024. Construction permission is in process. Construction is expected to be started in November 2025 and to be completed in April 2027. The registration of the condominium will be proceeded once the construction is completed. The purchaser must fully pay any payments under the Agreement for Sale and Purchase of Condominium including common property expense, sinking fund and tax stipulated by the project owner or in accordance with the regulation of the Condominium Juristic Person. Remark: The company reserves the right to change all information without prior notice. The illustration of the project is simulated for advertising purposes only.

